

Summary of Mischief Reef Observed Changes In 2020.

Now 150 Fishing Vessels in Mischief Reef Harbor As Of October 2020

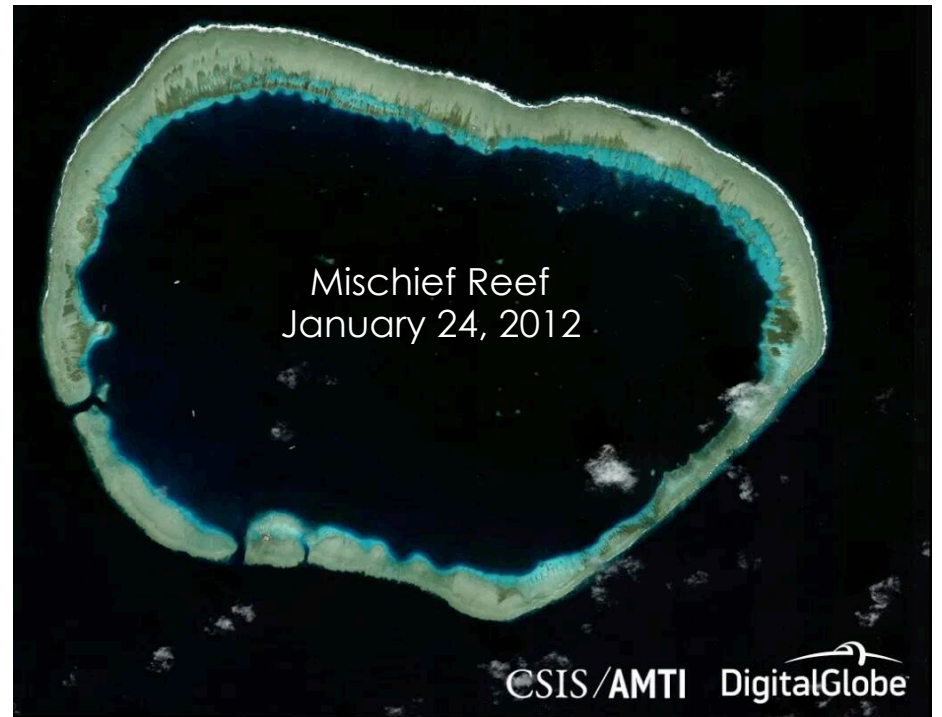
Analysis By Similarity In Collaboration
With AllSource
October 2020



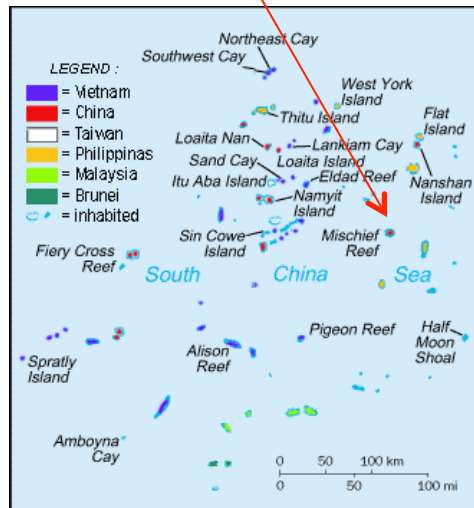
A Brief History Of Mischief Reef



Mischief Reef is an artificial island created and occupied by China and located within the Philippine Exclusive Economic Zone. China performed various reclamation activities at at least two locations on the rim of the atoll in the period from 1995 to 2013, but in the period from the end of 2013 to the end of 2016 a large artificial island of 1,379 acres (558 ha) was created around the majority of the perimeter of the lagoon.



Imagery credit: Sentinel 2
"European Space Agency -
produced from ESA remote
sensing data"



Imagery Published by [Asia Maritime Transparency Initiative](http://AsiaMaritimeTransparencyInitiative.com)

Mischief Reef Changes In 2020



We found netting, of different colors (brown, dark toned, white, red) that was not present in April, then present in May, then not present in June at 8 locations. Possibly used for camouflage and/or sun cover during periods of increased human activity around the structures in question.



January 25, 2020



May 7, 2020

Imagery credit: ©
CNES 2019-2020,
Distribution AIRBUS DS

Mischief Reef Changes In 2020



We found some changes to concrete pavement/parking areas adjacent to two radar towers; this could possibly be related to communication/radar infrastructure changes. These changes occurred between April and May 2020 at two locations. First location:



January 25, 2020



May 7, 2020

Mischief Reef Changes In 2020



Changes to concrete pavement/
parking areas adjacent to two radar
towers. Second location:



January 25, 2020

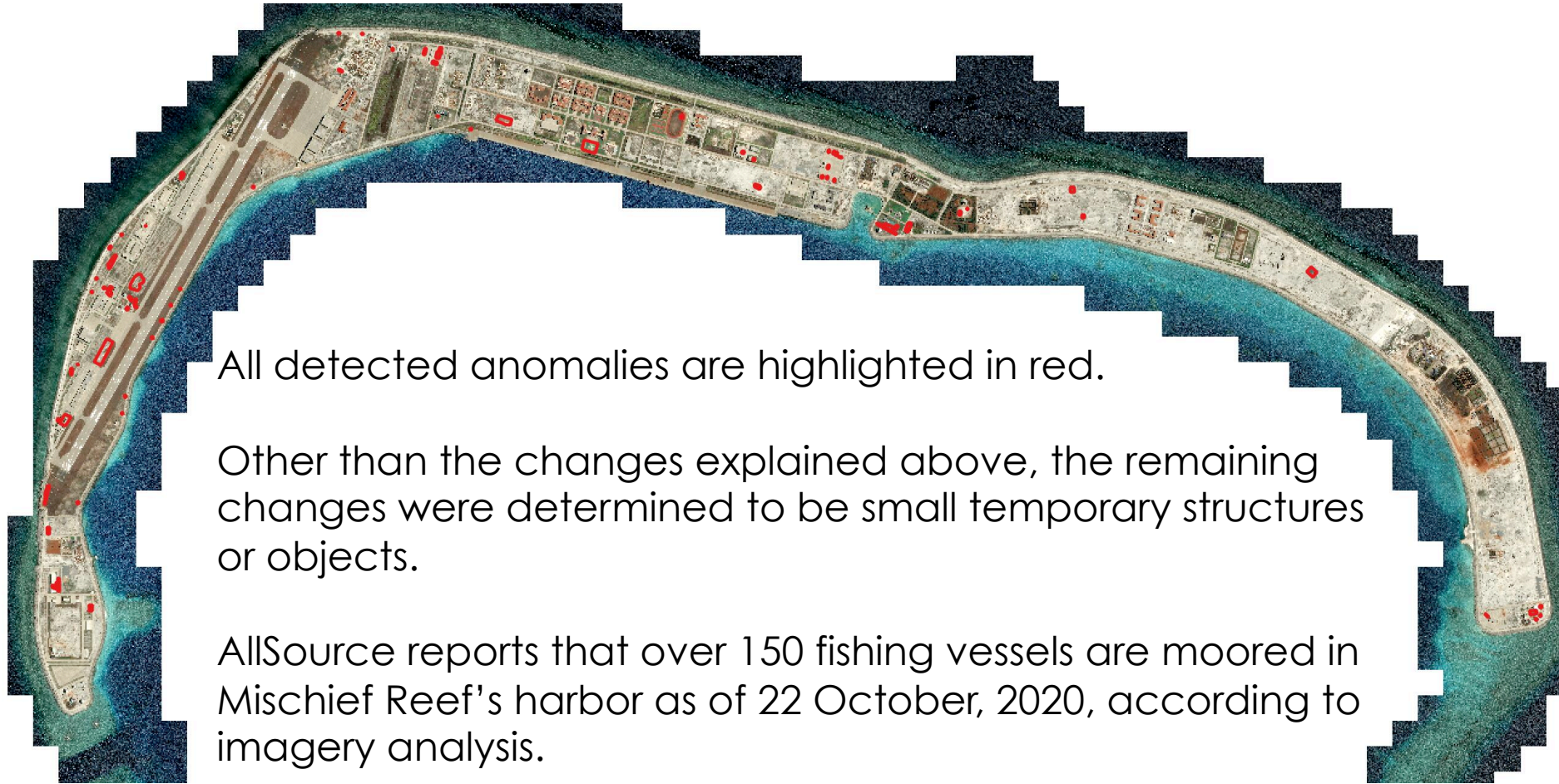


May 7, 2020

Imagery credit: ©
CNES 2019-2020,
Distribution AIRBUS DS



Mischief Reef Changes In 2020



All detected anomalies are highlighted in red.

Other than the changes explained above, the remaining changes were determined to be small temporary structures or objects.

AllSource reports that over 150 fishing vessels are moored in Mischief Reef's harbor as of 22 October, 2020, according to imagery analysis.